

SLAYER NEWS

FROM THE NORTHWEST SARCOMA FOUNDATION

NORTHWEST
SARCOMA
FOUNDATION
HOPE • EDUCATION • SUPPORT

DONATE

APRIL 2025



[WEBSITE](#)



Jeremy
Board member

Thank you to everyone who makes Northwest Sarcoma Foundation a thriving resource of hope, education and support for patients and families in the Pacific Northwest and beyond. I have been involved with NWSF since shortly after I arrived in Seattle two and a half years ago- and this year I have been lucky enough to join the board. As a surgical oncologist at Fred Hutch Cancer Center, I have a personal relationship with the sarcoma community, and I have seen firsthand the impact of NWSF on sarcoma patients and their loved ones. With my role at NWSF, I look forward to expanding my relationships with recipients of our outreach beyond the clinic, as well as, to developing meaningful and lasting relationships with donors and partners who make the organization what it is.

As we enter spring, we are coming up on a wonderful time to become involved, re-engage, or double down on your commitment to Northwest Sarcoma Foundation. On April 22, we continue our Patient Education series with Clinical Trials 101, hosted by Dr. Michael Wagner, current board member and Sarcoma Medical Oncologist at Dana Farber Cancer Center in Boston, MA. During this seminar, Dr. Wagner will describe the ins and outs of clinical trials and where they fit into the sarcoma patient's care plan. Participants will also have a chance to ask questions, making this an event not to be missed. Navigate to the Events page at nwsarcoma.org to register today!

In addition, we look forward to Hope Grows Here, our annual Fundraising Events in the Portland, OR and Spokane, WA communities, held May 15th and June 28th, respectively. In Seattle, we have a new community building concept, FRIENDS walk, in Woodinville, WA June 26th. So dust off your Central Perk Mugs and knowledge of your favorite character as you stroll and sip wine. What could be better?! Registration for all three events are open today on the Events page and a DONATION is encouraged through the registration links at any time.

Lastly, I want to acknowledge the impact of your support to Help\$, one of NWSF's core programs that provides grants to patients in need undergoing active treatment. Since 2020, we have nearly tripled the number of awarded grants, and this year we are on track for continued growth. This trend undoubtedly speaks to more rapid referrals and increased awareness of NWSF and the Help\$ program. All of which are made possible by your continued support, so for this we say, THANK YOU!

Jeremy – NWSF Board Member

Volunteer with us!

Upcoming Committee meetings

[Development Committee](#) 4.8.2025, 6 p.m. PT

[Programs Committee](#) 5.1.2025, 11 a.m. PT

[Events Committee](#) 4.3.2025, 6:30 p.m. PT

[Marketing-Communications Committee](#) 6.12.2025, 9 a.m. PT



VOLUNTEER



JOHN'S PERSONAL STORY



John has spent most of his life around soccer. At an early age, he developed a deep passion for the sport and embraced the competitive spirit inherent in it. This mindset proved invaluable when he faced his toughest opponent yet: cancer.

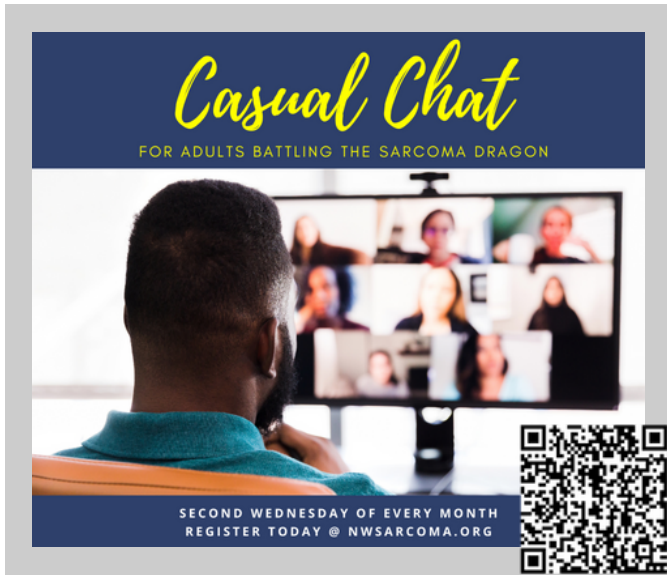
While playing in college he realized pursuing the sport professionally may not be an option, so he transitioned into coaching. John has now spent over 25 years leading teams through the highs of wins and lows of losses on the pitch. At an early age, he developed a deep passion for soccer and embraced the competitive spirit inherent in the sport, a mindset that proved invaluable when he faced his toughest opponent yet: cancer. Not only was it cancer, but a rare form that develops from the connective tissues that hold together the human body, called Sarcoma.

[READ JOHN'S FULL STORY](#)

NOTES OF THANKS TO YOU, OUR DONORS



UPCOMING PROGRAMS & EVENTS



Casual Chats are free events, register once, the same Zoom link each time.

[Adult patients & survivors](#): Second Wednesday of every month.

Next meeting, 4/9/2025 6 - 7 p.m.

Led by either Jo McNeal, Chelsea Winn, or volunteer peer-led by Aaron Couch.

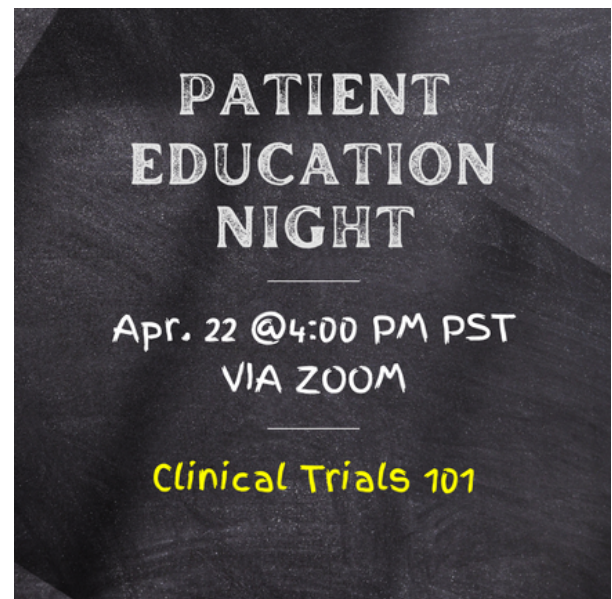
One-on-One Caregiver Support

For years, Anita served as the Caregiver Casual Chat lead for NWSF, offering support to others in similar situations. Now, she is shifting her focus to more personal, one-on-one support for caregivers and those coping with loss. [LEARN MORE HERE](#)

PATIENT EDUCATION NIGHT

This event will be presented by Dr. Michael Wagner to answer the in and outs of clinical trials and when they are an appropriate part of a patient's treatment plan.

[REGISTER](#)



HOPE GROWS HERE ● 5/15/2025 PORTLAND, OR

Imperial Bottle Shop & Taproom owner, Shawn Stackpoole - a Sarcoma survivor, and NWSF invite you to join us in providing HOPE (happiness, optimism, positive encouragement) to anyone affected by Sarcoma in the PNW.

[REGISTER](#)



Follow
-US-

MARCH'S SOCIAL MEDIA BESTS

Follow
-US-

How to support us further and it's FREE



Costs nothing



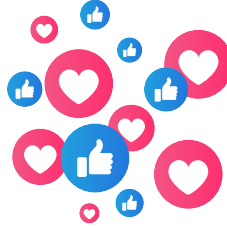
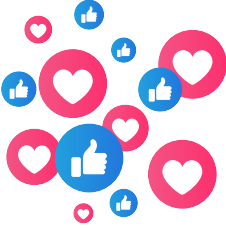
Gives motivation



Introduces others to our page



Helps with engagement



I APPRECIATE YOU



THANK YOU!



NORTHWEST SARCOMA FOUNDATION
HOPE • EDUCATION • SUPPORT



Thank you 2025 Corporate Partners



COPYRIGHT © 2025 NORTHWEST SARCOMA FOUNDATION, ALL RIGHTS RESERVED.

YOU ARE RECEIVING THIS EMAIL BECAUSE YOU HAVE SUPPORTED OR BEEN SUPPORTED BY THE NORTHWEST SARCOMA FOUNDATION.

WE DO NOT SELL ANY SUPPORTER INFORMATION.

OUR MAILING ADDRESS IS:

NORTHWEST SARCOMA FOUNDATION

117 E. LOUISA STREET #443

SEATTLE, WA 98102

[WEBSITE](#)

WANT TO CHANGE HOW YOU RECEIVE THESE EMAILS?
YOU CAN UPDATE YOUR PREFERENCES OR UNSUBSCRIBE FROM THIS LIST.

[DONATE](#)